

**A.R.C.
LASER**

enlighten your surgery.

FOX

BASIC SURGICAL LASER

**980
nm**

ENT
PERFECTION

**PRE-
PROGRAMMED**

**BATTERY
POWERED**

PORTABLE



APPLICATIONS

CYST
DCR
EPISTAXIS
GRANULOMA
LETP
MYRINGOTOMY
POLYP
SEPTUM
SNORING
STAPES
TONSIL
TURBINATE

IN-OFFICE
USE
OPD

OPERATING
ROOM
OT

Order Information
FOX 980 ENT



HiFlex fibers for max freedom



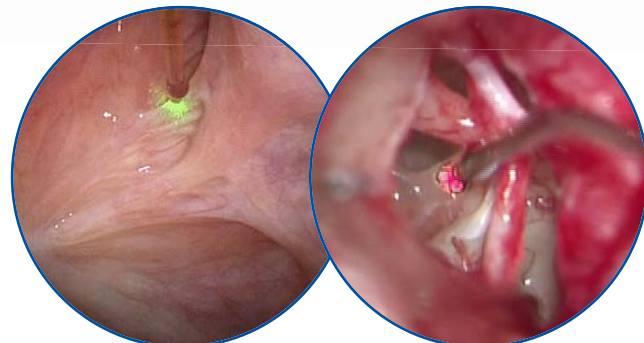
Light weight flexibility



Noiseless system

Fiber guided freedom and flexibility

The lightweight and portable FOX laser fits in the palm of your hand. The ultra powerful setup allows laser beams with up to 12 W – perfect to perform surgery or treatments in outpatient setup or in the operating room.



1) Tuboplasty
2012 Dr. Jumah, Villingen-
Schwenningen, Germany

2) Stapedotomy
2016 Dr. Hornung,
Erlangen, Germany

SURGICAL DIODE LASER

FOX 980 rapidly coagulates tissue.

FOX 980 is available at a fraction of the cost of other lasers.

FOX 980 should be present in every physician's office.

FOX 980 means minimal costs for disposables.



Otology Probe

Surgery / Allround Handpiece

DCR Probe



**U.C.
2.0** Modern
connector
system

Advantages

- Convincing wavelength properties and flexibility
- Allows outpatient treatment – anywhere
- Lower costs of accessories and maintenance

BENEFIT:

FOX-Diode-Laser cuts without almost any bleeding and allows precise handling.

FOX is fiber guided
and adds more FREEDOM
to your SURGERY.

SPECIFICATIONS	
	FOX
Laser Wavelength	980 nm
Output Power (Laser)	12 W
Operating Mode	CW, Pulsed, Single
Beam Delivery	Fiber @ UC connector A.R.C.
Display / Control	Color touch screen / Foot switch
Cooling	Internal, forced air
Aiming Beam	Green 532 nm, adjustable
Power Requirement	100-240 V AC, 47/63 Hz, 1.06-0.45 A
Dimension (HxWxD)	17.4 cm x 14.2 cm x 16.3 cm
Weight (Laser)	1.2 kg